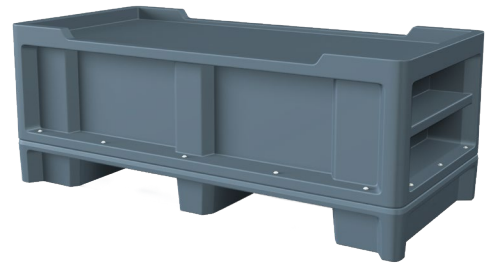



*Shown mounted  
with floor mount  
Endurance™ Bed*



## FEATURES:

- Lifetime warranty.
- 10.25H x 86L x 42D.
- One piece, rotationally molded design for maximum durability. Made from high impact "no break" polyethylene.
- Designed for use with The Endurance™ Bed 2.0 Series. (bolts into existing mounting holes)
- Can be bolted to the floor via concealed pilot holes with hardware of your choice.
- Optional ballasting by using interior pockets concealed by attached bed.  
**(Do not use loose sand)**
- Sound dampening, easy to clean, sanitize, and maintain.
- Passes Flammability UL 94 HB.
- ISO 22196 tested showing a >99% reduction in bacteria.
- Flame Retardant-passes Cal 133.  
(Test reports available upon request)
- **Customization:** Custom colors available upon request. Contact Cortech for details.
- Manufactured in the USA to ISO Quality Standards. 

ITEM	COLOR
7606AQ	Aqua
7606BK	Black
7606BG	Blue Gray
7606BN	Brown
7606BY	Burgundy
7606GY	Gray
7606GN	Green
7606IG	Indigo
7606MB	Midnight Blue
7606SD	Sand
7606SB	Slate Blue
7606SG	Stone Gray



Available in



Aqua    Black    Blue Gray    Brown    Burgundy    Gray    Green    Indigo    Midnight Blue    Sand    Slate Blue    Stone Gray

Our Intense Use Products Contribute to a Safe and Humane Environment.

For Full Specifications Call Toll Free 800-571-0770 / Fax: 630-455-0813 / or Visit [www.cortechusa.com](http://www.cortechusa.com)

### OVERVIEW

The Endurance™ Bed Riser is designed to be combined with the Endurance™ 2.0 Bed for increased bed height for easier patient care, easier patient entry and exit, as well as allowing for mechanical lift device use. **Manufactured to ISO Quality Standards in the USA.**

**Designed for use with the Endurance Bed 2.0.**

### FABRICATION/MATERIAL

Durable, one piece, rotationally molded design for increased strength. Constructed of high impact polyethylene. No steel or wood components. Flame Retardant (as shown passes Cal 133). Test reports available upon request.

**COLOR** Aqua, Black, Blue Gray, Brown, Burgundy, Gray, Green, Indigo, Midnight Blue, Sand, Slate Blue and Stone Gray. Custom colors available upon request.

**WEIGHT** 70 lbs.

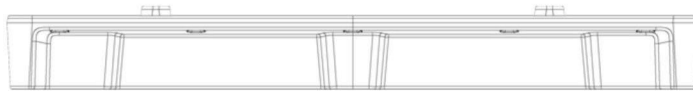
**OPTIONS** Can be easily filled with sandbags through ballast door on site to weigh down.

**ASSEMBLY** Bolt to the floor via concealed pilot holes with hardware of your choice.

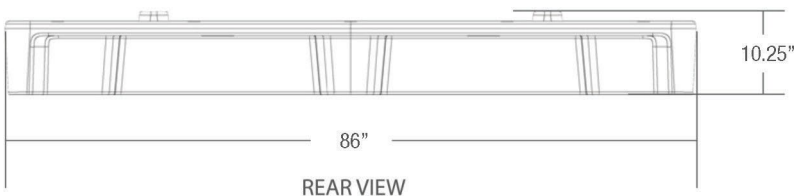
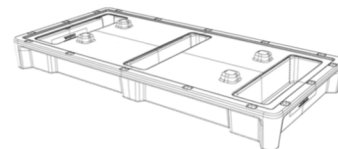
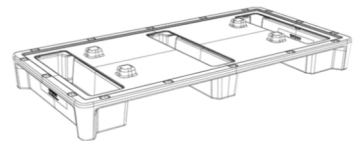
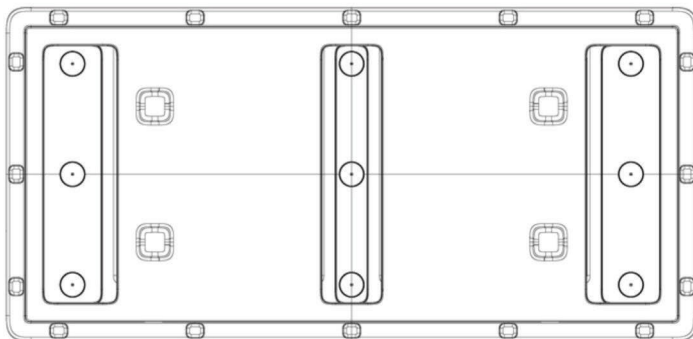
**WARRANTY** Lifetime Warranty.

**MAINTENANCE** Easy to clean, sanitize & maintain.

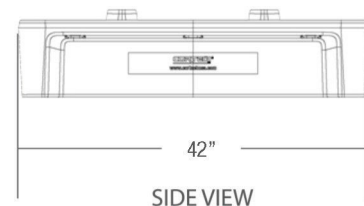
FRONT VIEW



TOP VIEW



REAR VIEW



SIDE VIEW

Warranty valid on manufacturing defects only. Specifications subject to change without notice. Final dimensions & mounting holes subject to +/- 1.25% variance. Cortech discourages pre-drilling pilot holes until product is on site and ready for installation.

2025 Cortech USA. All Rights Reserved.