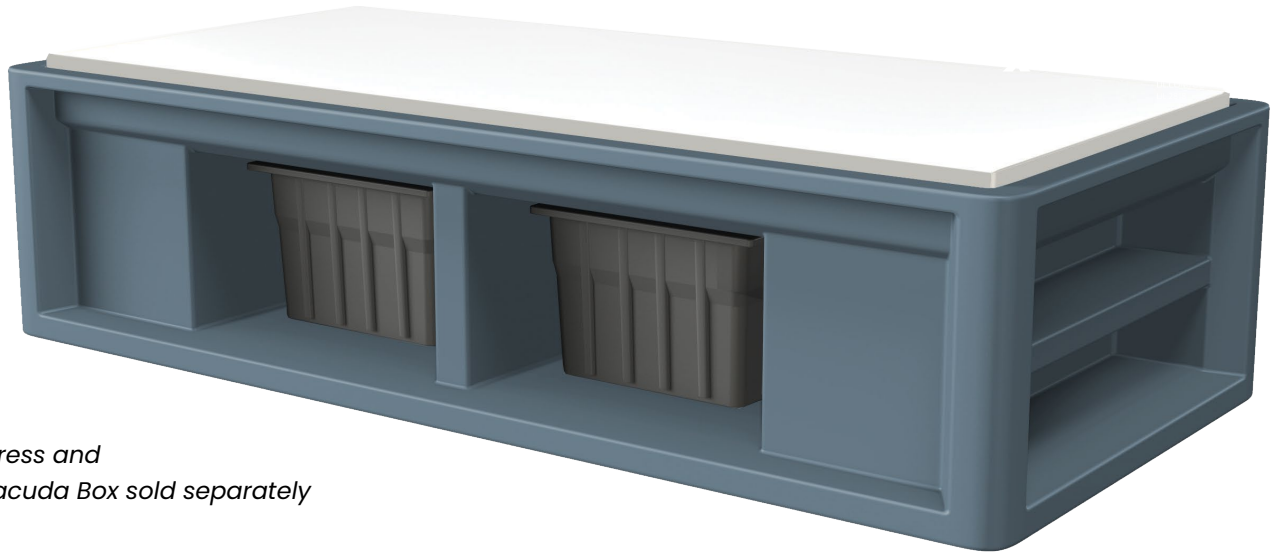



### Molded One Piece Platform Bed with Storage



*Mattress and Barracuda Box sold separately*

#### FEATURES:

- Lifetime warranty.
- 21H x 81L x 35D.
- One piece, rotationally molded design for maximum durability. Made from high impact "no break" polyethylene.
- Designed for 30" x 75" mattress; A 4.5" thick mattress is recommended.
- Molded-in side slots designed for property box storage. (bed may be reverse mounted to eliminate this feature)
- Molded-in end shelving for open storage of personal items.
- **End shelf storage capacity:** 1.3 cu. ft. (2 shelves)
- **Side storage capacity:** 4.0 cu. ft. (2 compartments)
- 2000 lb. Static Load.
- Easy to clean, sanitize, and maintain.
- Field-installed restraint rings are available.
- Can be bolted to the floor via concealed pilot holes with hardware of your choice.
- Passes Flammability UL 94 HB.
- Flame Retardant: passes Cal 133. (Test reports available upon request)
- ISO 22196 tested showing a >99% reduction in bacteria.
- **Customization:** Custom colors available upon request. Contact Cortech for details.
- Manufactured in the USA to ISO Quality Standards. 

ITEM	COLOR
7601AQ	Aqua
7601BK	Black
7601BG	Blue Gray
7601BN	Brown
7601BY	Burgundy
7601GY	Gray
7601GN	Green
7601IG	Indigo
7601MB	Midnight Blue
7601SD	Sand
7601SB	Slate Blue
7601SG	Stone Gray



Available in



Aqua    Black    Blue Gray    Brown    Burgundy    Gray    Green    Indigo    Midnight Blue    Sand    Slate Blue    Stone Gray

Our Intense Use Products Contribute to a Safe and Humane Environment.

For Full Specifications Call Toll Free 800-571-0770 / Fax: 630-455-0813 / or Visit [www.cortechusa.com](http://www.cortechusa.com)

#### OVERVIEW

The Endurance™ Bed 1.0 is a versatile, heavy duty, medium sized sleep surface ideal for continuous, intensive use environments. Molded in side slots for property box storage and increased structural span strength. Molded in end shelving for open storage of personal items. **Manufactured to ISO Quality Standards in the USA.**

**Designed for use with 30" x 75" mattress.**

#### FABRICATION/MATERIAL

Durable, one piece, rotationally molded design for increased strength. Constructed of high impact polyethylene. No steel or wood components. Flame Retardant (as shown passes Cal 133). Test reports available upon request.

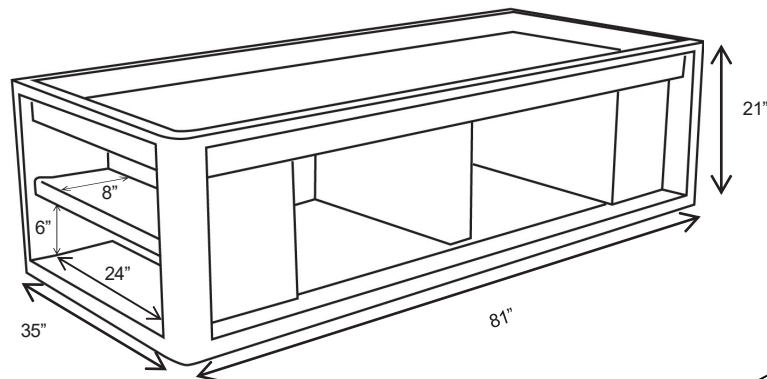
**COLOR** Aqua, Black, Blue Gray, Brown, Burgundy, Gray, Green, Indigo, Midnight Blue, Sand, Slate Blue and Stone Gray. Custom colors available upon request.

**WEIGHT** 110 lbs.

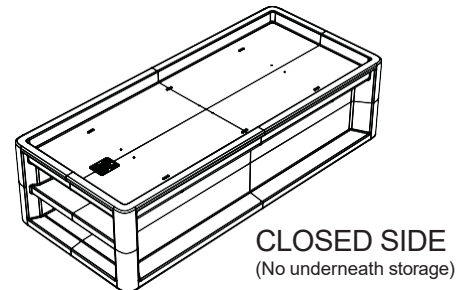
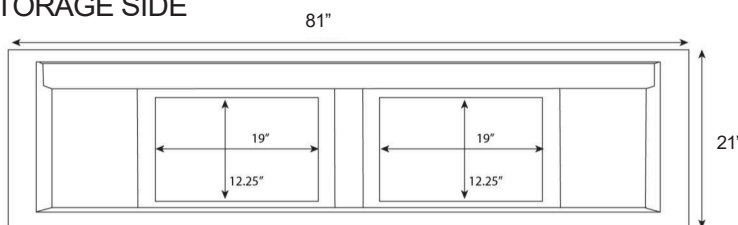
**ASSEMBLY** Bolt to the floor via concealed pilot holes with hardware of your choice.

**WARRANTY** Lifetime Warranty.

**MAINTENANCE** Easy to clean, sanitize & maintain.

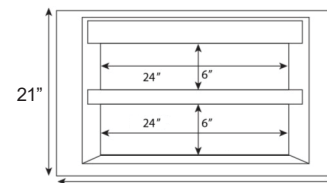
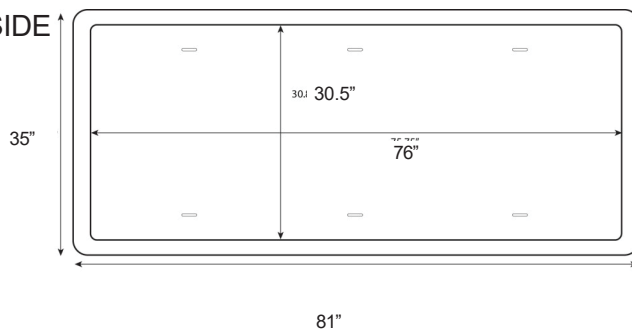


STORAGE SIDE



CLOSED SIDE  
(No underneath storage)

TOP SIDE



35"  
END