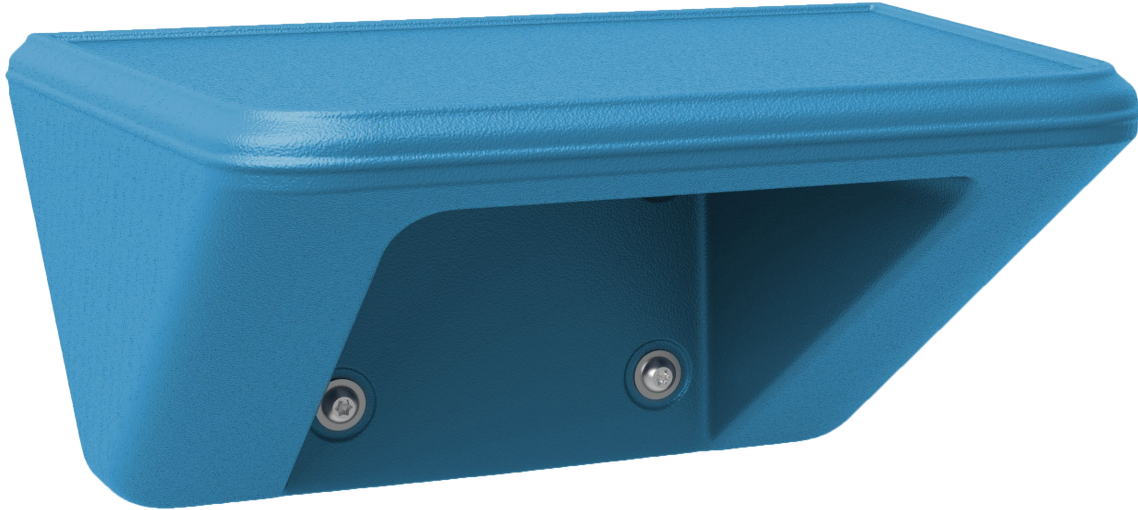



CORTECH

Wall Mount Shelf/Step - Large

ENDURANCE™ ALL PURPOSE SHELF 2.0



FEATURES:

- Lifetime warranty.
- 8H x 16W x 10D.
- One piece, rotationally molded design for maximum durability. Made from high impact "no break" polyethylene.
- Functions as shelf or step.
- Can be bolted to the wall via concealed pilot holes with hardware of your choice.
- Sound dampening, easy to clean, sanitize, and maintain.
- ISO 22196 tested showing a >99% reduction in bacteria.
- Passes Flammability UL 94 HB.
- Flame Retardant-passes Cal 133.
(Test reports available upon request)
- **Customization:** Custom colors available upon request. Contact Cortech for details.
- Manufactured in the USA to ISO Quality Standards. 

ITEM	COLOR
8600AQ	Aqua
8600BK	Black
8600BG	Blue Gray
8600BN	Brown
8600BY	Burgundy
8600GY	Gray
8600GN	Green
8600IG	Indigo
8600MB	Midnight Blue
8600SD	Sand
8600SB	Slate Blue
8600SG	Stone Gray



Available in



OVERVIEW

The Endurance™ All Purpose Wall Mount Shelf/Step 2.0 is a versatile, heavy duty, large shelf that is ideal for continuous, intensive use environments. **Manufactured to ISO Quality Standards in the USA.**

FABRICATION/MATERIAL

Durable, one piece, rotationally molded design for increased strength. Constructed of high impact polyethylene. No steel or wood components. Flame Retardant (as shown passes Cal 133). Test reports available upon request.

COLOR Aqua, Black, Blue Gray, Brown, Burgundy, Gray, Green, Indigo, Midnight Blue, Sand, Slate Blue and Stone Gray. Custom colors available upon request.

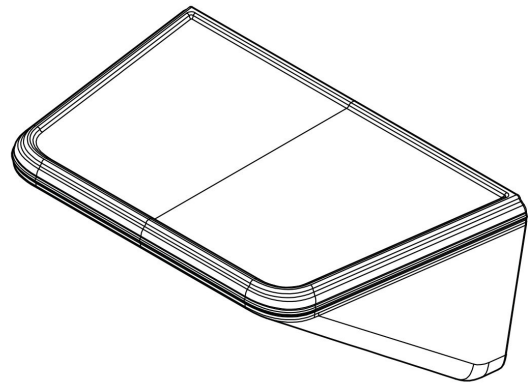
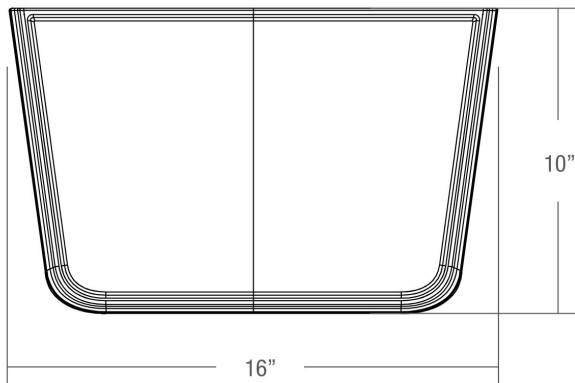
WEIGHT 4 lbs.

ASSEMBLY Bolt to the wall via concealed pilot holes with hardware of your choice.

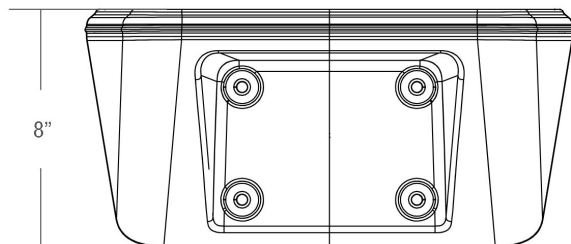
WARRANTY Lifetime Warranty.

MAINTENANCE Easy to clean, sanitize & maintain.

TOP VIEW



FRONT VIEW



SIDE VIEW

